

## Servipak® Flex

Tough and flexible bituminous board for the protection of self adhesive membranes.

### Description

Servipak® Flex is a tough but flexible protection board made of modified bituminous compound with a fiberglass core for dimensional stability. The boards are covered with polyethylene film on both sides. To aid identification and to avoid substitution, film is printed with Servipak® Flex brand on one side.

Servipak® Flex is made to protect the waterproofing system during backfill operation.

### Installation

#### Vertical Installation

1. Start at bottom of wall and apply to height of first backfill layer.
2. Wherever possible backfill and compact in layers to minimise risk of displacement of boards.
3. To locate boards, apply nine 150 mm x 150 mm 'patches' (8 towards edges and 1 in the middle) of Bitustik™ 4000 150 mm double sided bituminous tapes.
4. Remove release film from Bitustik™ patches and apply boards to clean, dry membrane and roll/press patches firmly.

5. Alternatively a mastic or contact adhesive recommended by Grace can be used to fix the boards.
6. Once the protection board is fixed in place, subsequent boards shall be laid continuously by butt fitting the edges. Ensure boards stay close butt joints during backfilling and compaction.
7. Provide temporary propping of protection boards where necessary and remove as backfill is placed.

### Limitations

Maximum UV exposure of protection boards 30 days. On vertical walls due to the temporary fixing used, backfill is recommended as soon as installation is completed.

### Health and Safety

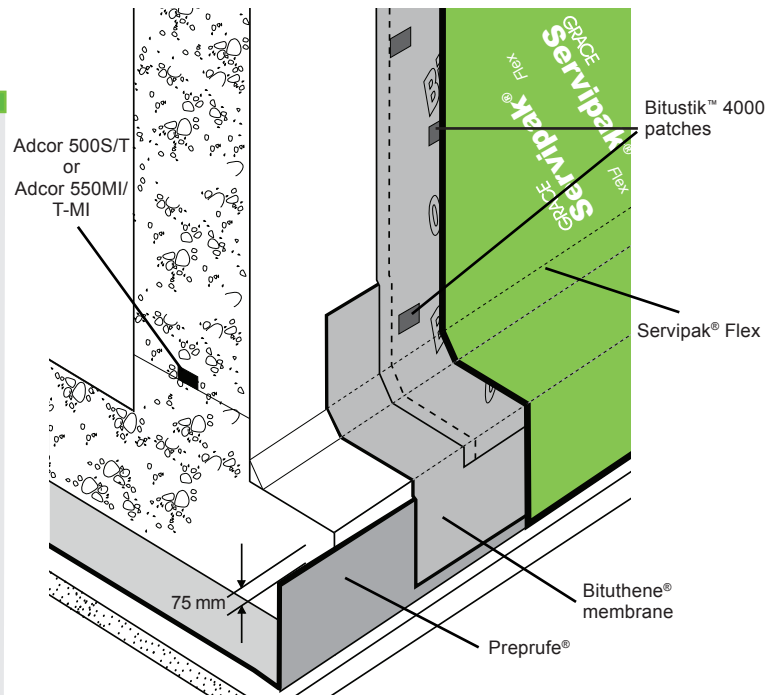
There is no requirement for a Material Safety Data Sheet for Protection Boards or tapes.

### Storage

Store in a shaded and ventilated area on flat pallet horizontally. Keep boards flat.

### Advantages

- Flexible - can be folded through chamfered edges without cutting or breaking.
- Fast, easy and cold applied.
- High resistance to impact and puncture.
- Rot resistant and durable.
- Recommended for use with Bituthene® and backfilled Preprufe® membranes.
- High heat resistance - allowing use at elevated temperature in hot climates.
- Provides protection to membrane against damage from backfill and site operations.



Details shown are typical illustrations only and not working drawings. For assistance with working drawings and additional technical advice please contact Grace Technical Services

## Supply

Servipak® Flex					
Thickness	Coverage	Length	Width	Weight	Supply
3 mm	2 sqm	2 m	1 m	9 Kg/Board	275 Boards/Pallet
4 mm	2 sqm	2 m	1 m	12 Kg/Board	200 Boards/Pallet
6 mm	2 sqm	2 m	1 m	18 Kg/Board	125 Boards/Pallet
<b>Ancillary Products</b> Bitustik™ 4000                      150 mm x 12 m rolls (6 rolls per carton)					
<i>* All dimensions and weights are nominal</i>					

All declared values shown in this data sheet are based on test results determined under laboratory conditions and with the product sample taken directly from stock in its original packing without any alteration or modification of its component parts.

[www.graceconstruction.com](http://www.graceconstruction.com)

Grace Construction Products, Emirates Chemicals LLC, Festival Tower, Suite 1701, Dubai Festival City, Dubai, UAE Tel +971 4 2329901 Fax +971 4 2329940 Email: [meinfo@grace.com](mailto:meinfo@grace.com)

**GRACE**

Bituthene and Preprufe are registered trademarks of W R Grace & Co.-Conn. Bitustik is a trademark of W R Grace & Co.-Conn.

The information given is based on data and knowledge considered by GRACE to be true and accurate and is offered for the user's consideration, investigation and verification only. Since the conditions of use are beyond our control we do not warrant the results to be obtained. None of these statements, recommendations or suggestions shall constitute a warranty, guarantee, representation or statement of similar legal nature. No statement, recommendation or suggestion is intended for any use which would violate or infringe statutory obligations or any rights belonging to a third party. This data sheet should be checked against the latest version available from the local GRACE Representative or the GRACE website. The information contained in the latest data sheet supersedes all previously published editions. Visits to site by GRACE personnel do not constitute supervisory responsibility.

These products may be covered by patents or patents pending. Copyright 2016. Grace Construction Products Ltd SPAKFLX/ME/SM/001e 02/16